

POKA-YOKE SHEET

PROBLEM:

HEATER MARKS AT BEND PORTION OF U.BOLT AS CURRENT EXCEED FROM THE SEPCIFIED CURRENT 125 AMP ON HEATER MACHINE

SEC: UBT

DT. 08.04.02



PREVENT ERROR

SHUTDOWN

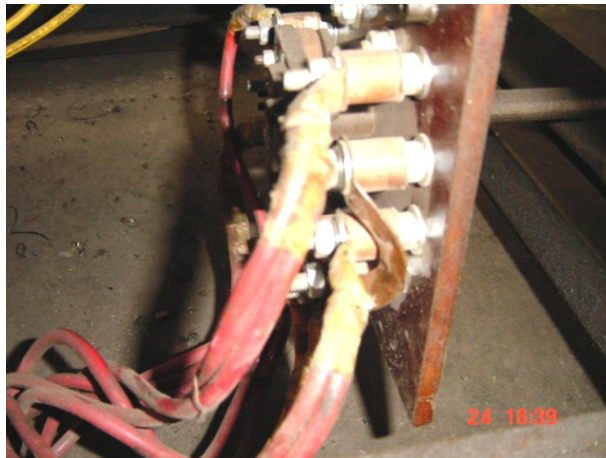


CONTROL

DETECT ERROR

ALARM

BEFORE



Heater Marks are observed at Bend portion of U.Bolt as current exceeds beyond its specified limit i.e. 125 AMP due to regulator setting on higher side

AFTER



Electric circuits are changed in such a way that current will not exceed beyond specified limit. Regulator locked at 125 AMP