

# Poka-yoke Sheet

**Problem :** 3070 DS Bore punching can be in wrong direction .

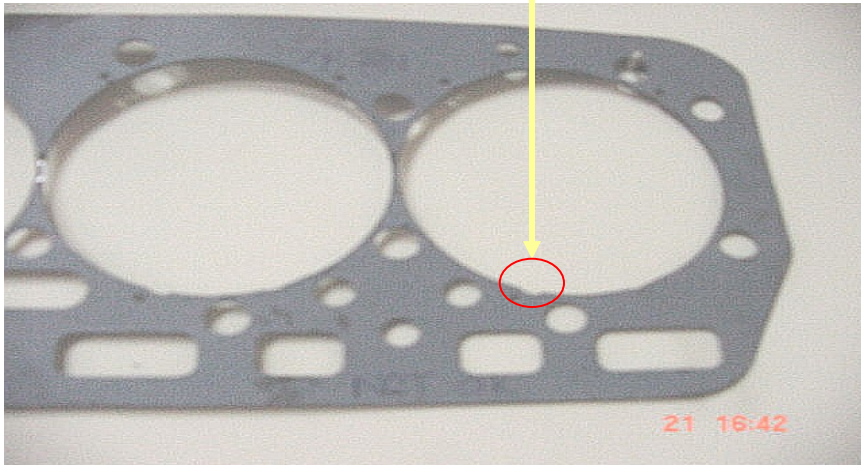
**Solution :** Do not allow the gasket to sit on bore punching tool with wrong direction.

**Key improvement :** Pin provided in bore punching tool.

	Prevent Error		Shutdown
		*	Control
*	Detect Error		Alarm

## Before

Notch not in right place



## After

Poka-Yoke Pin

