

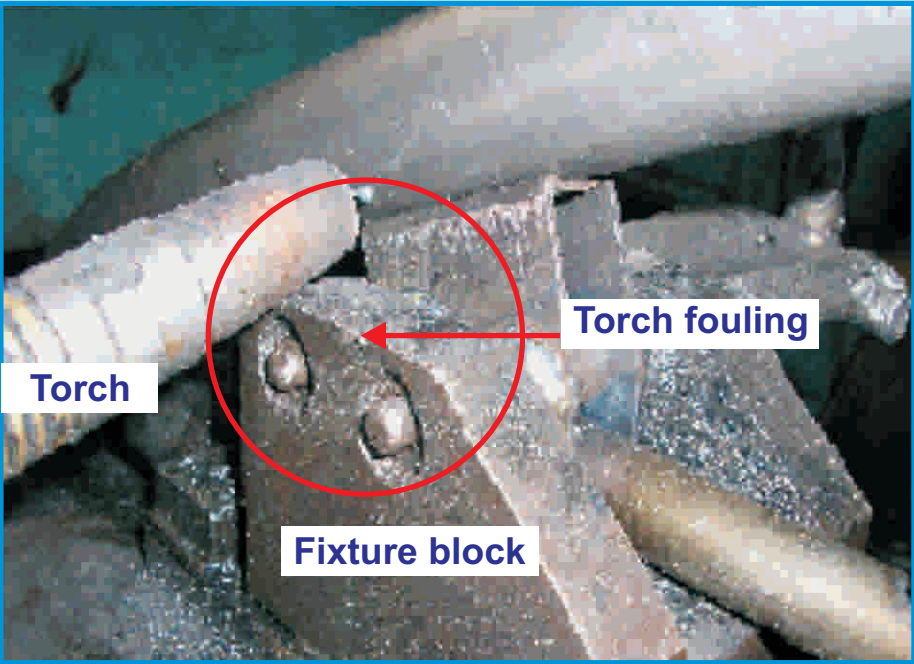
# IN HOUSE REJECTION: KAIZEN

## 3a. 3 Can not Assemble

Physical Phenomenon : **Weld run shift.**  
Due to : Man / Machine / **Method** / Material

Before

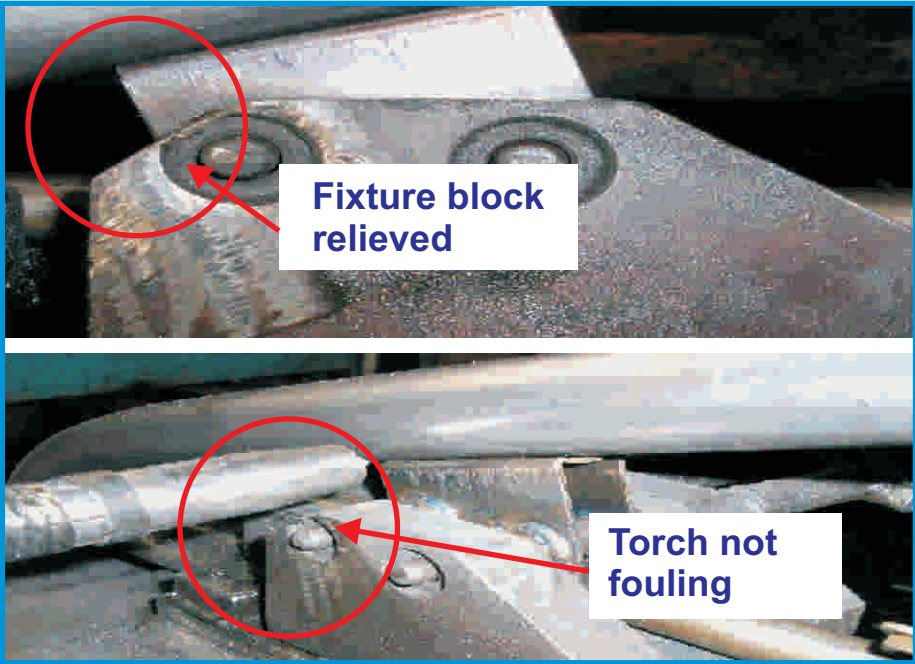
Fixture block fouling to welding torch while welding.



Root Cause : Difficult to access.

After

Kaizen Idea : Easy to access.



Kaizen : Fixture block relieved.