

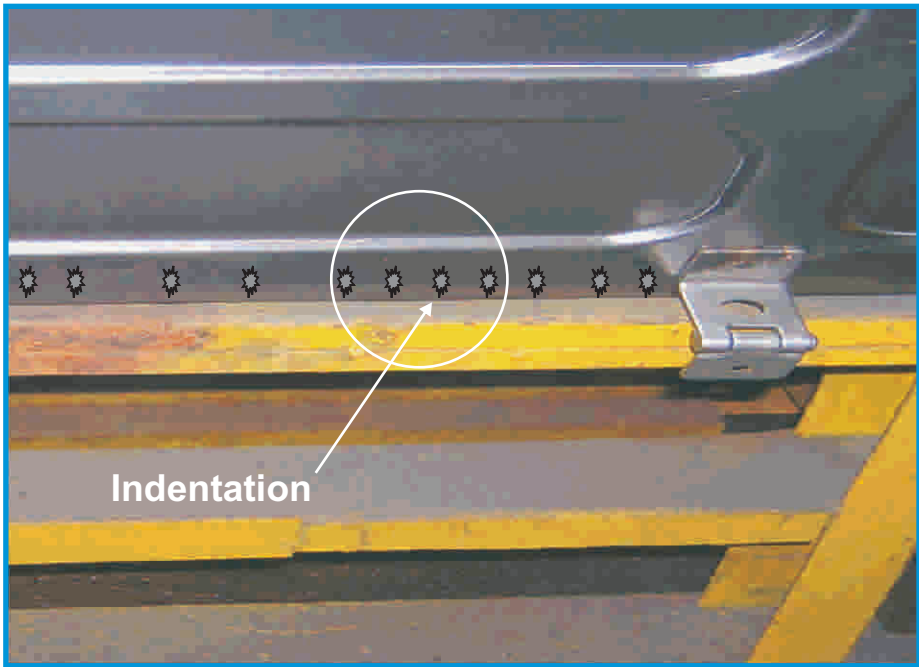
IN HOUSE REJECTION: KAIZEN

4a.1 Appearance not Good

Physical Phenomenon : **Weld spot indentation**
Due to : Man / Machine / **Method** / Material

Before

No positive support to part while spot welding.



Root Cause : Easy to deflect.

After

Kaizen Idea : Difficult to deflect



Kaizen : Positive support provided to avoid deflection while spot welding.