

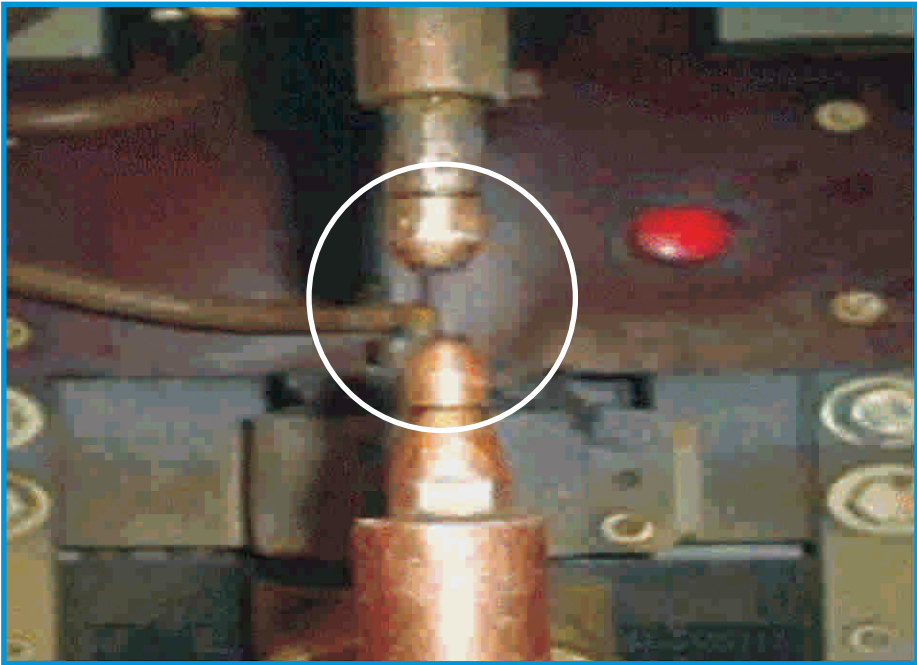
# IN HOUSE REJECTION: KAIZEN

## 4b.1 Appearance not Good

Physical Phenomenon : **Weld spot indentation**  
Due to : Man / **Machine** / Method / Material

Before

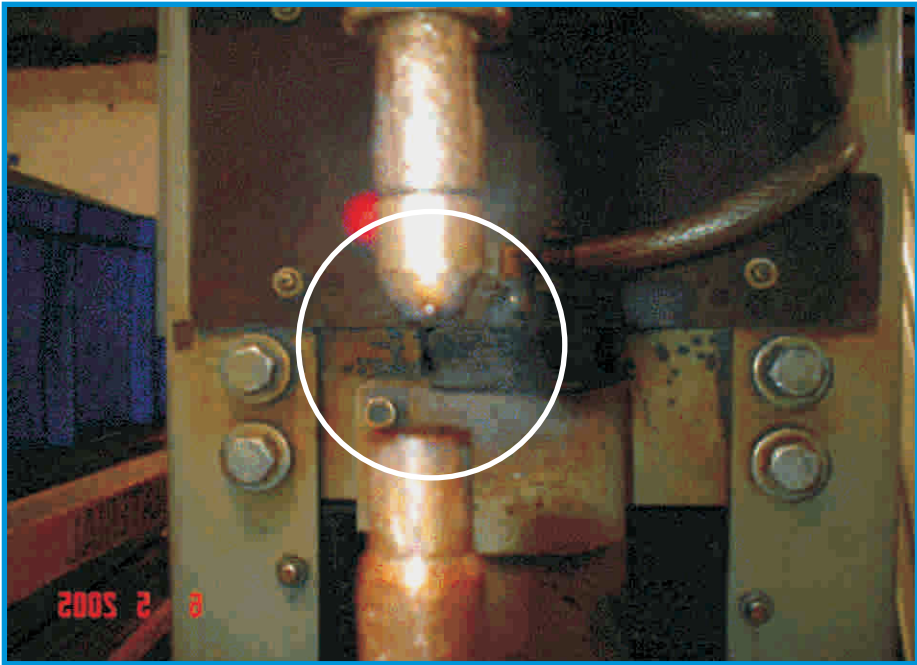
Both electrodes Pointed.



Root Cause : Less contact area of outside electrodes

After

Kaizen Idea : More contact area of outside electrode.



Kaizen : Use flat outside electrode.