

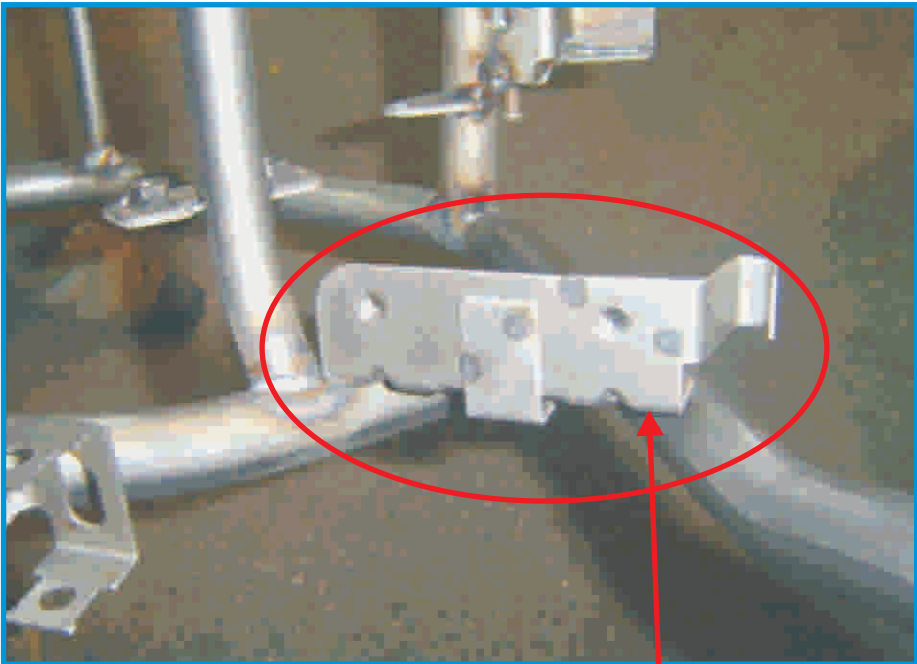
IN HOUSE REJECTION: KAIZEN

2a.1 Cannot Assemble

Physical Phenomenon : **Spatter in weld nut**
Due to : Man / Machine / **Method** / Material

Before

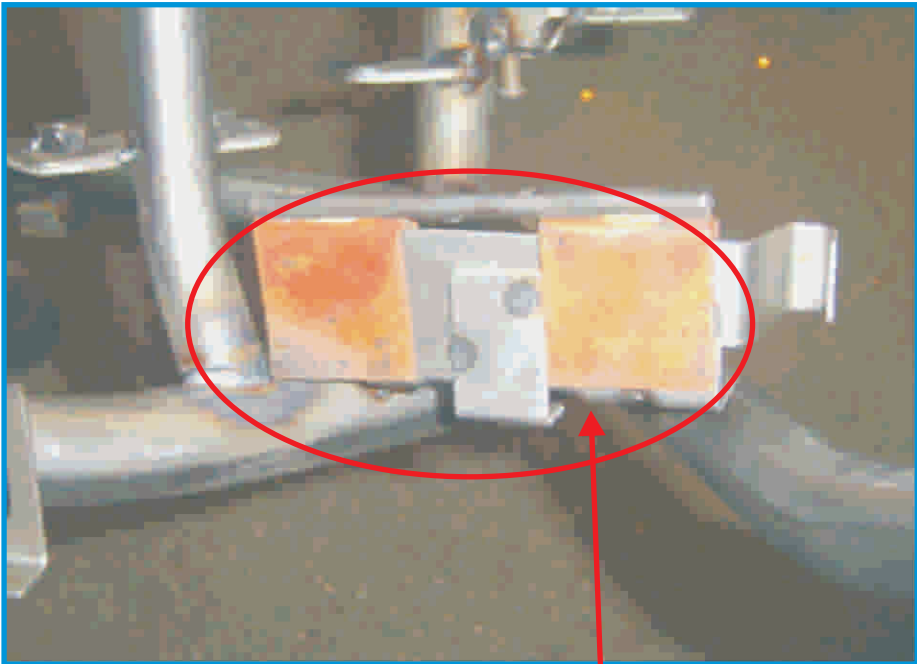
Spatter entering inside the weld nut



Root Cause : No masking

After

Kaizen Idea - Masking



Kaizen : Providing Manual Cover (Material Copper)